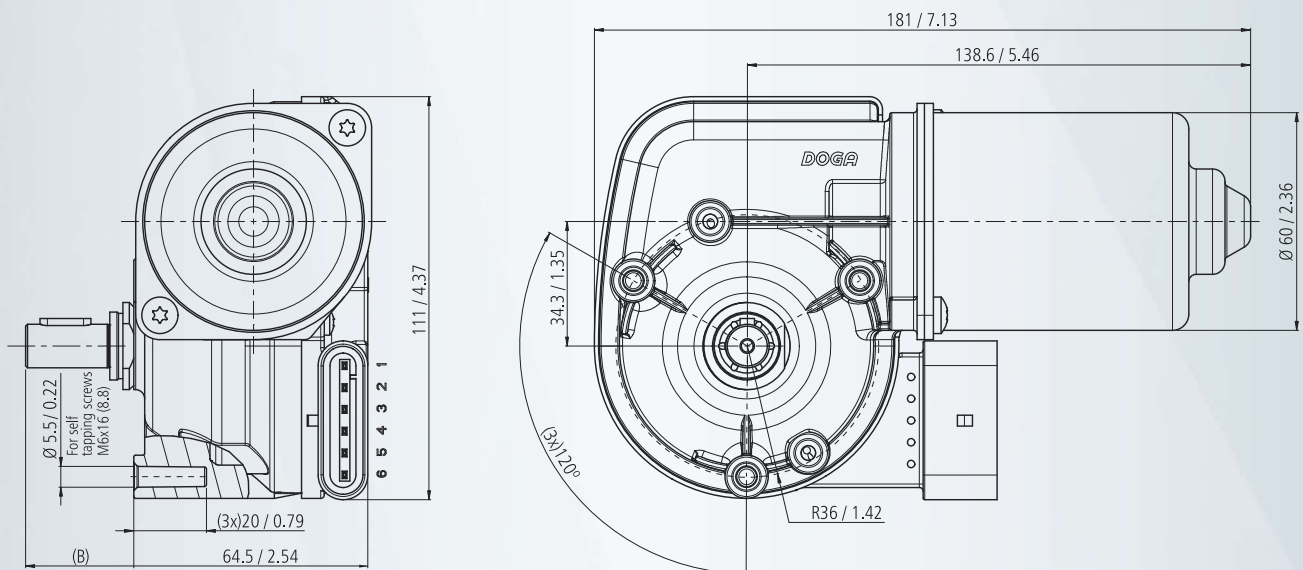


311



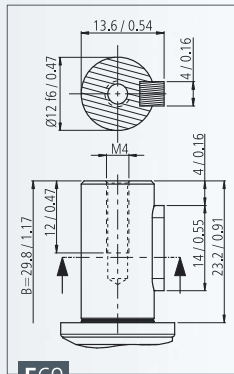
MOTOR FEATURES

REFERENCE NUMBER REFERENCIA REFERENZNUMMERN	NOMINAL VOLTAGE TENSION NOMINAL NENNSPANNUNG	NOMINAL TORQUE PAR NOMINAL DREHMOMENT NOMINAL	NOMINAL SPEED VELOCIDAD NOMINAL VITESSE NOMINALE GESCHWINDIGKEIT NOMINAL	NOMINAL CURRENT CORRIENTE NOMINAL COURANT NOMINAL NOMINALSTROM	STARTING TORQUE PAR DE ARRANQUE COUPLE DE DEMARRAGE ANZUGSDREHMOMENT	STARTING CURRENT CORRIENTE DE ARRANQUE COURANT DE DEMARRAGE ANLAUFSTROM	SHAFT EJE ARBRE WELLE	CONNECTIONS CONEXIONES CONNEXIONS ANSCHLUSSART	WIRING DIAGRAM ESQUEMA ELECTRICO SCHEMA ELECTRIQUE SCHALTBILD	TRANSMISSION RATIO RELACION DE REDUCCION RAPPORT DE REDUCTEUR UNTERSETZUNG	APPROXIMATE WEIGHT PESO APROXIMADO POIDS APPROXIMATIF GEWICHT (kg)	WATER TIGHTNESS GRADO DE ESTANQUEIDAD ETANCHÉITÉ FEUCHTIGKEITSSCHUTZKLASSE	WHEEL MATERIAL MATERIAL RUEDA MATERIAU ROUE MAT. DES SCHNECKENRADES	CURVE CURVA COURBE KURVE
	Un (V)	Mn (N.m./lbf.in)	Fn (r.p.m.)	In (A)	Ma (N.m./lbf.in)	Ia (A)				i	P (kg/lb)	IP		
311G4112000	12	7/62	33	4,5	35/309,8	25	E69	C48	F18	76:1	1,2 / 2,76	IP69K	PLA	80
311G4113000	24	7/62	33	2,5	35/309,8	14	E69	C48	F18	76:1	1,2 / 2,76	IP69K	PLA	80
311N4012000	12	6/53,1	45	5,5	35/309,8	43	E69	C48	F18	76:1	1,2 / 2,76	IP69K	PLA	81
311N4013000	24	6/53,1	45	2,7	35/309,8	26	E69	C48	F18	76:1	1,2 / 2,76	IP69K	PLA	81
311Y6022000	12	4/35	70	6	35/309,8	50	E69	C48	F18	76:1	1,2 / 2,76	IP69K	PLA	82
311Y6023000	24	4/35	70	3	35/309,8	25	E69	C48	F18	76:1	1,2 / 2,76	IP69K	PLA	82



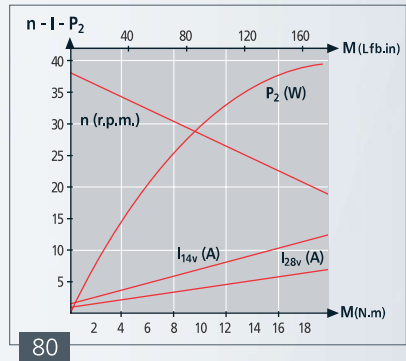
mm / inch

SHAFT **EJE** ARBRE **WELLE**



E69

CURVES **CURVAS** COURBES **KURVEN**



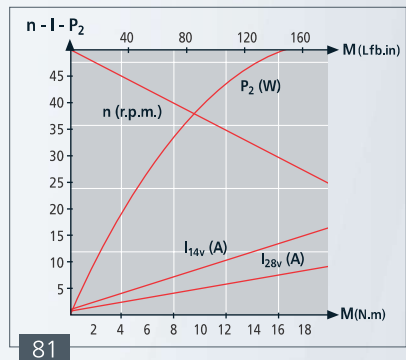
80

CONNECTIONS **CONEXIONES** CONNEXIONS **ANSCHLUSSART**



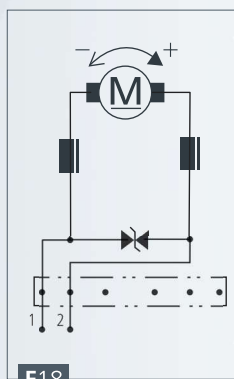
C48

Mating housing 6POS (not supplied)
 TE/AMP Superseal 282090-1

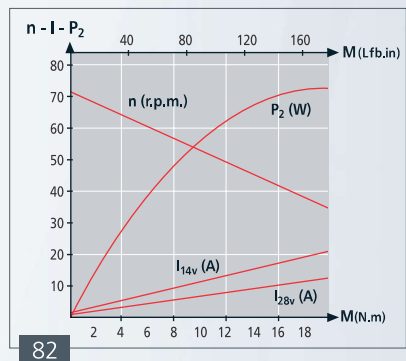


81

WIRING DIAGRAM **ESQUEMA ELÉCTRICO** SCHÉMA ÉLECTRIQUE **SCHALTBILD**



F18



82